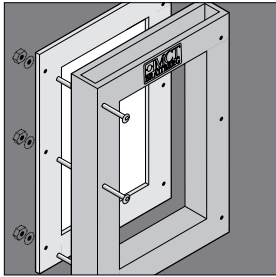
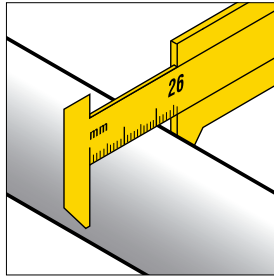


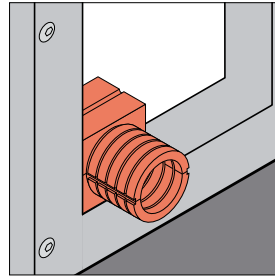
**N.B. For pressure installation lubricate all components liberally.**



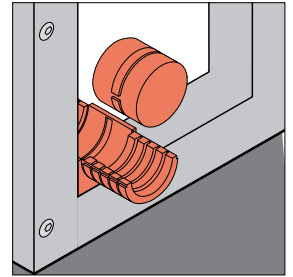
**1** Fix frame to opening using gasket and M6 screws supplied.



**2** Measure cable. In this example cable has a diameter of 26 mm.



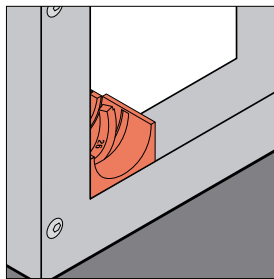
**3** Once cable is sized select appropriate block.



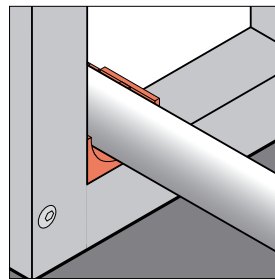
**4** Remove top half of block and plug.



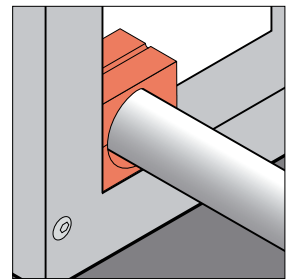
**5** Detach sealing rings from main block and retain ring corresponding to measured cable size. In this example 26 mm.



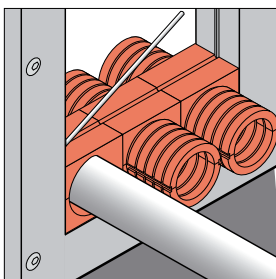
**6** Place the 26 mm sealing ring in centre groove of block.



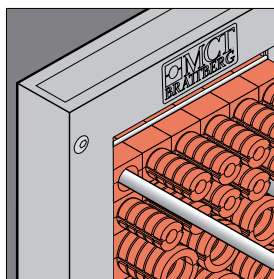
**7** Place cable on block.



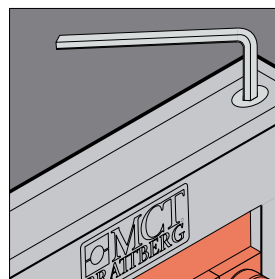
**8** Replace top of block to encase cable.



**9** If more cables are required repeat the sequence. If not insert blanks to complete row and insert staybar to secure.



**10** Build up frame repeating the process described in steps 2-9. In this example 2 more cables have been added using other block sizes.



**11** Insert compression system and tighten using allen key.