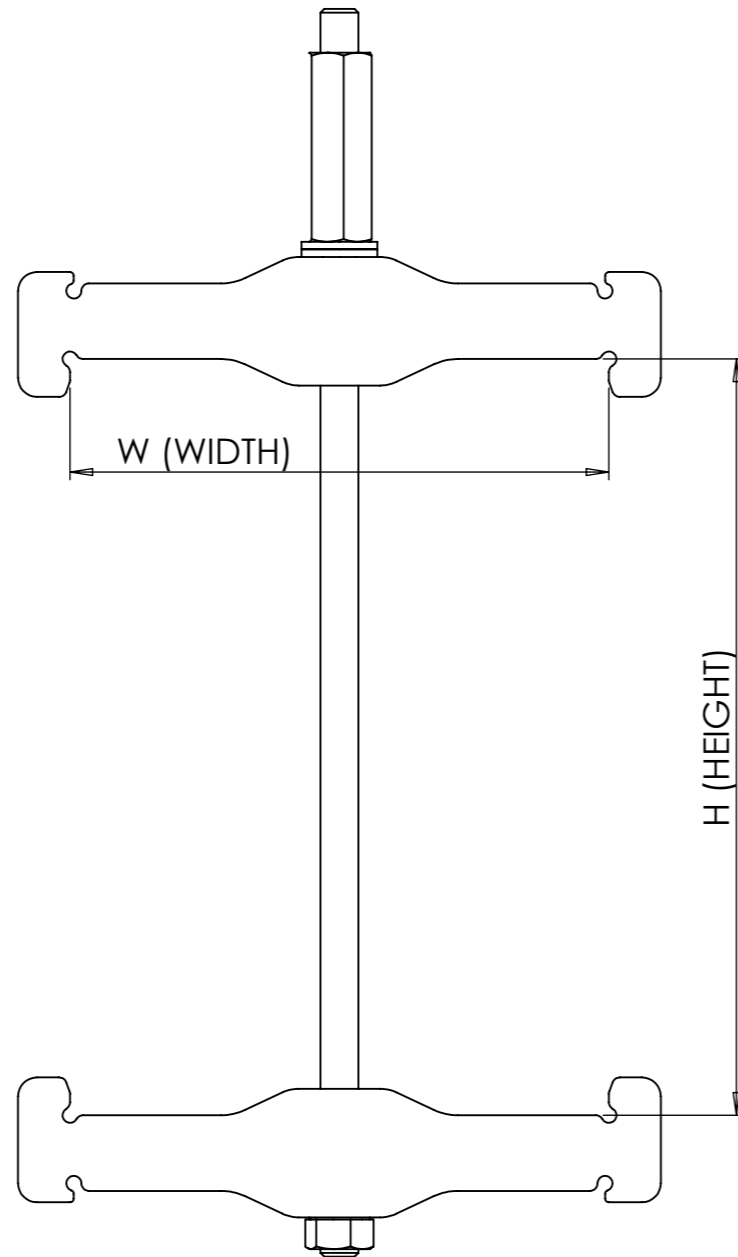
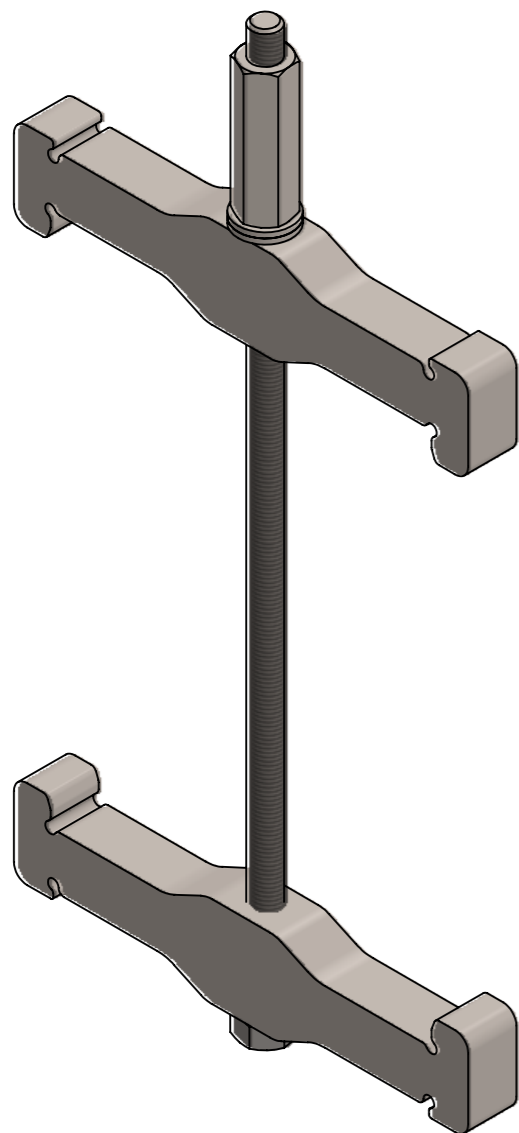


THIS DOCUMENT MUST NOT BE COPIED WITHOUT OUR WRITTEN PERMISSION, AND THE CONTENTS THEREOF MUST NOT BE IMPARTED TO A THIRD PARTY NOR BE USED FOR ANY UNAUTHORIZED PURPOSE. CONTRAVENTION WILL BE PROSECUTED.



REVISIONS			
REV.	DESCRIPTION	DATE	SIGNATURE
A		2022-01-04	JA

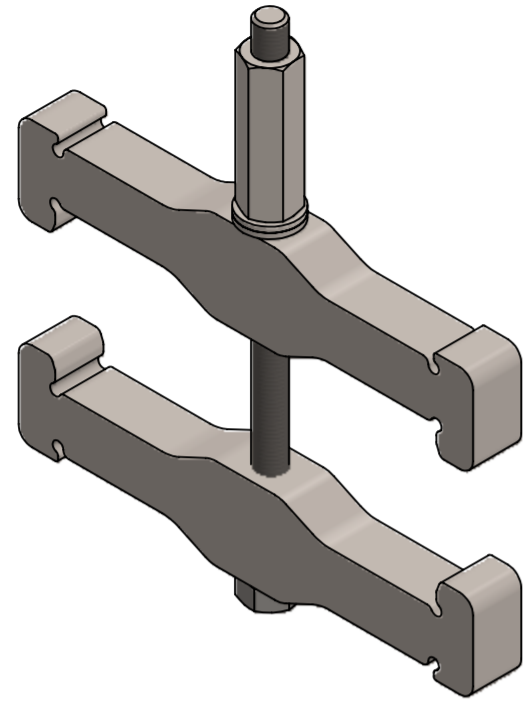
FRAME TYPE	W (WIDTH)
RGS/ RGSC	140,5
RGSK/ RGS-BTB	144,5
RGSK/ RGS-BTB COMBINATION x	142,5

FRAME TYPE	H (HEIGHT)
RGS/ RGSC	60
RGS-BTB TYPE 1	200
RGS-BTB TYPE 2	300
RGSK TYPE 1	120
RGSK TYPE 2	150
RGSK TYPE 3	200
RGSK TYPE 4	300

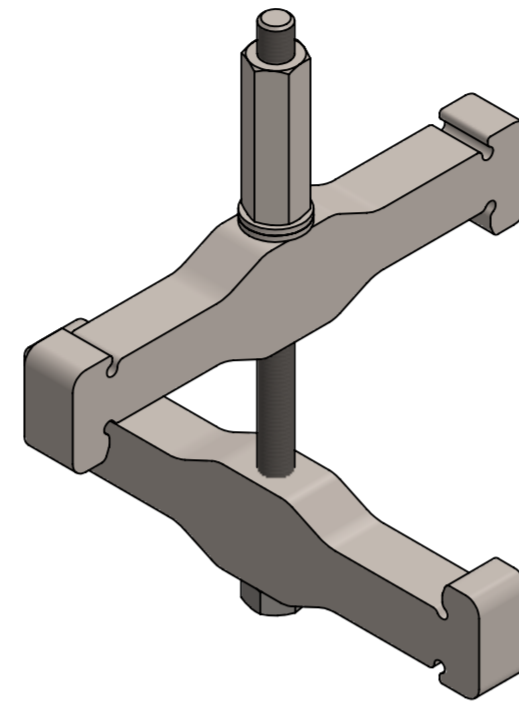
Ritad Drawn	Kontr. Check	Granskad Reviewed	Godkänd Approved	Tolerans där ej annat anges Tolerance unless otherwise not stated.	Smst. nr. Assembly drawing no.	Ersätter Replaces	E
JA	JA	AK	BJ	Ytjämnhet där ej annat anges. Surface finish otherwise not stated.	Material	Ersatt av Replaced of	Vikt Weight
220104	220104	220104	220104	Alla mått och uppgifter avser färdig produkt om ej annat anges All measures and other information refer to finished products unless otherwise not stated.		Kund ordernr. Customer order no	
				WELDING CLAMP FOR RGS/ RGSC/ RGSK/ RGS-BTB INFORMATION DRAWING		Ritn. nr. Draw. no.	Rev.
						1220005	A

THIS DOCUMENT MUST NOT BE COPIED WITHOUT OUR WRITTEN PERMISSION, AND THE CONTENTS THEREOF MUST NOT BE IMPARTED TO A THIRD PARTY WITHOUT OUR WRITTEN PERMISSION. THIS DOCUMENT IS NOT TO BE USED FOR ANY UNAPPROVED PURPOSE. CONTRAVENTION WILL BE PROSECUTED.

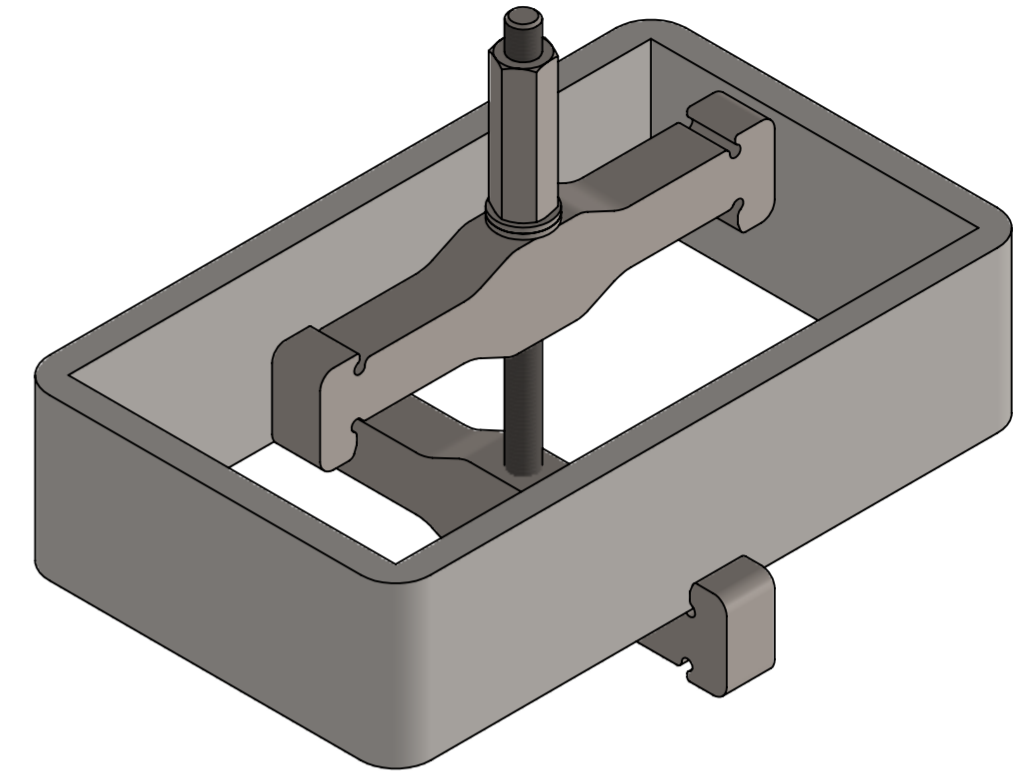
REVISIONS			
REV.	DESCRIPTION	DATE	SIGNATURE
A		2022-01-04	JA



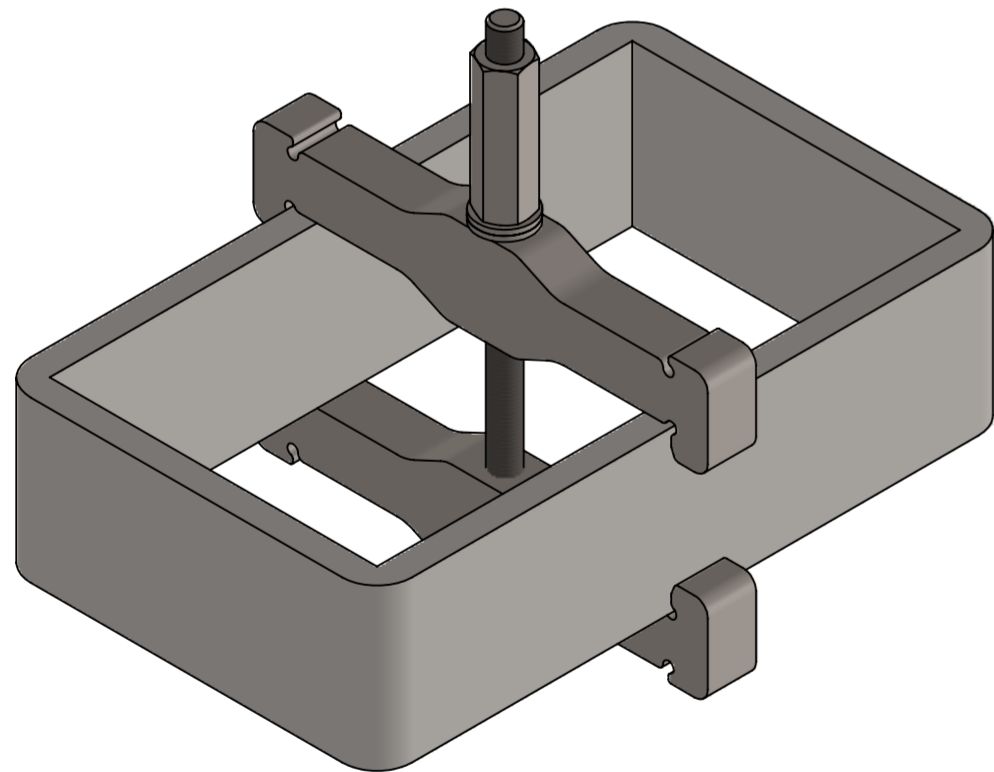
1 OPEN UP THE WELDING CLAMP SO IT FITS OVER THE TRANSIT.



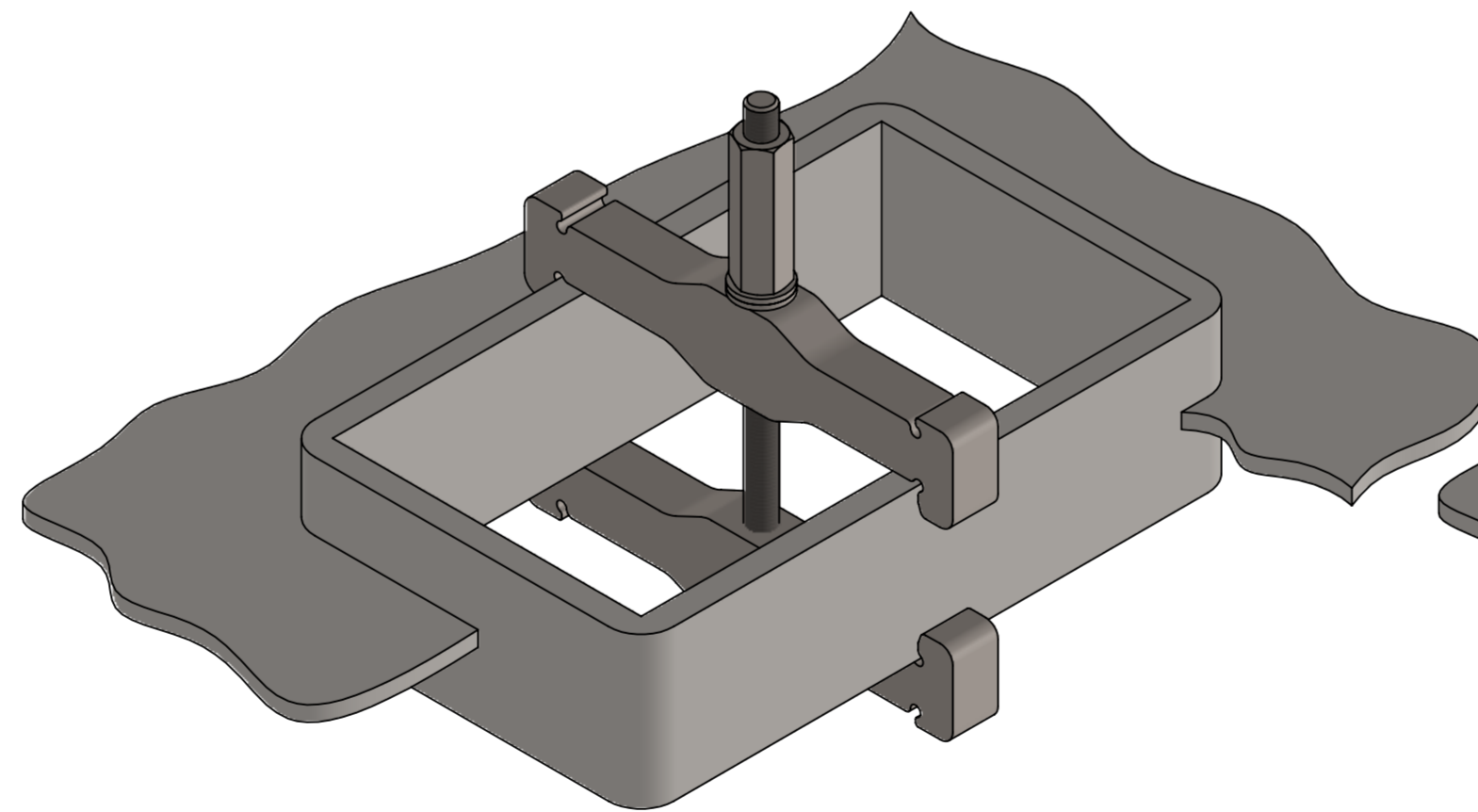
2 TURN THE WELDING CLAMP SO THAT ONE HALF IS 90° TO THE OTHER.



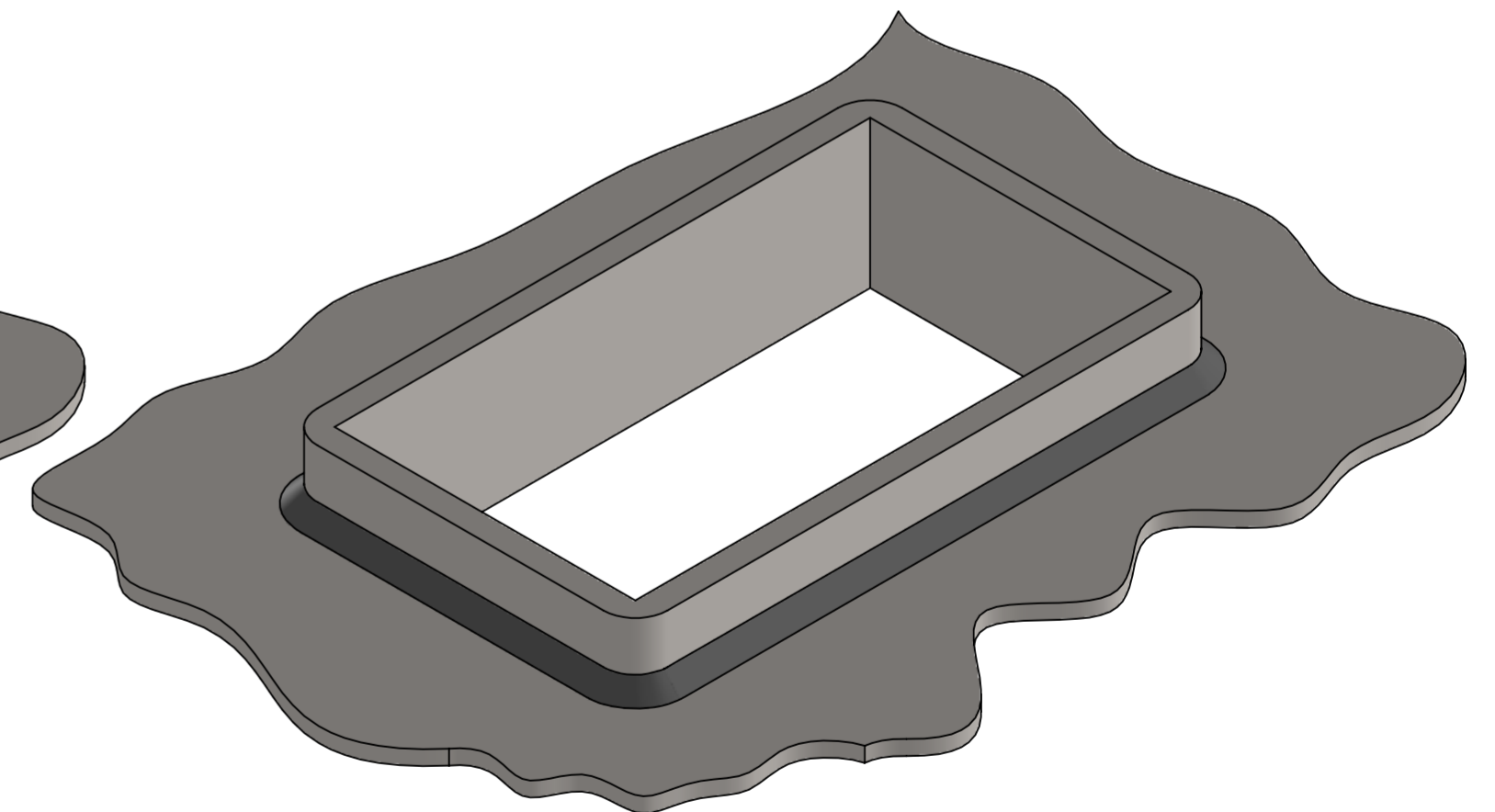
3 PLACE THE WELDING CLAMP INSIDE AND OVER THE TRANSIT.
(THE TRANSIT MUST BE IN PLACE IN THE STRUCTURE BEFORE THE WELDING CLAMP IS PLACED)



4 TURN THE WELDING CLAMP SO IT IS PARALLEL, TIGHTEN THE SCREW TO FULL STOP.



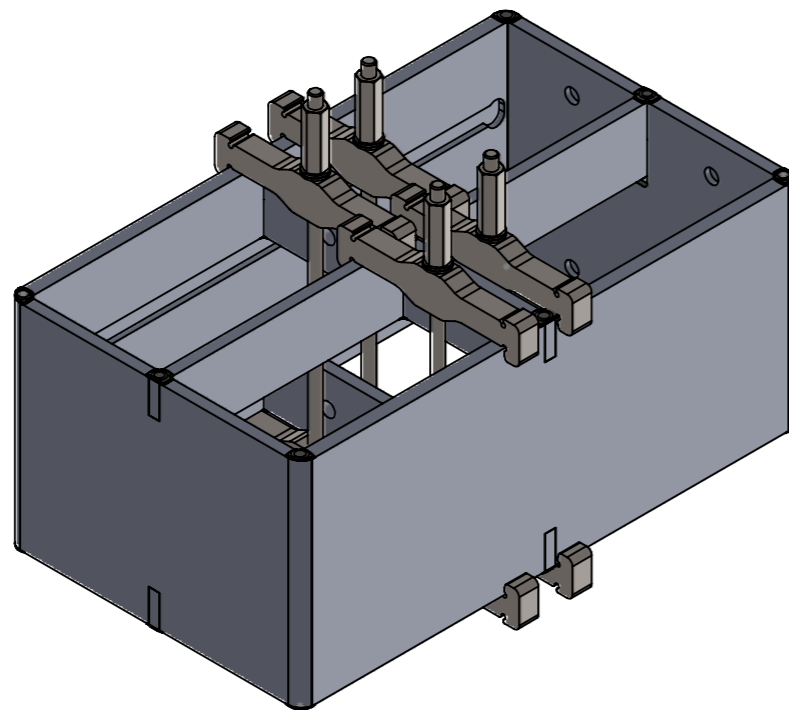
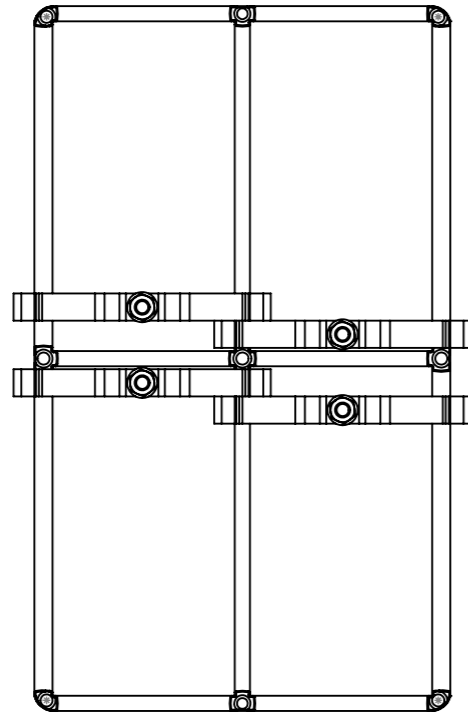
5 WELD THE TRANSIT TO THE STRUCTURE.



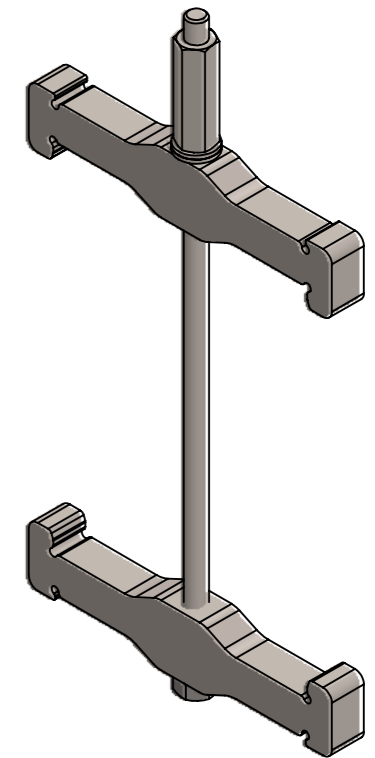
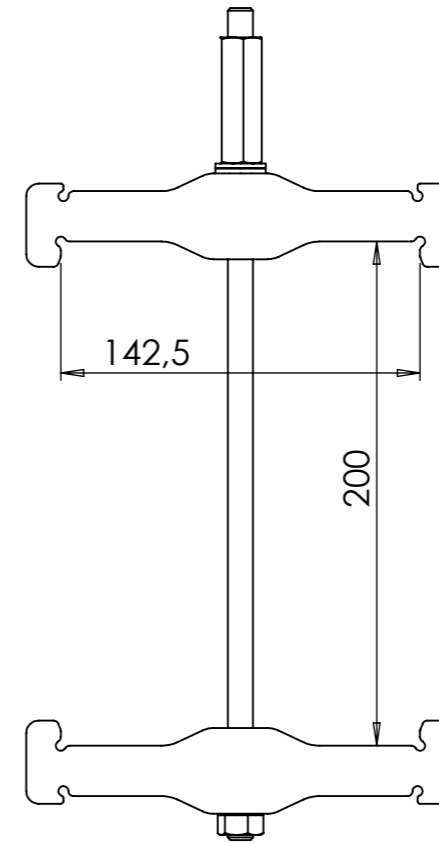
6 REMOVE THE WELDING CLAMP.

Ritad Drawn	Kontr. Check	Granskad Reviewed	Godkänd Approved	Tolerans där ej annat anges Tolerance unless otherwise not stated.	Smsl. nr. Assembly drawing no.	Ersätter Replaces	E
JA	JA	AK	BJ	Ytjämnhet där ej annat anges. Surface finish otherwise not stated.	Material	Ersatt av Replaced of	Vikt Weight
220104	220104	220104	220104			Alla mått och uppgifter avser färdig produkt om ej annat anges. All measures and other information refer to finished products unless otherwise not stated.	
				WELDING CLAMP INSTALLATION INSTRUCTION		Kund ordernr. Customer order no.	
MCT BRATTBERG				Ritn. nr. Draw. no.	1220006	Rev.	A

THIS DOCUMENT MUST NOT BE COPIED WITHOUT OUR WRITTEN PERMISSION, AND THE CONTENTS THEREOF MUST NOT BE IMPARTED TO A THIRD PARTY NOR BE USED FOR ANY UNAUTHORIZED PURPOSE. CONTRAVENTION WILL BE PROSECUTED.



REVISIONS			
REV.	DESCRIPTION	DATE	SIGNATURE
A		2018-07-11	AK



Ritad Drawn	Kontr. Check	Granskad Reviewed	Godkänd Approved	Tolerans där ej annat anges Tolerance unless otherwise not stated.	Smst. nr. Assembly drawing no.	Ersätter Replaces	E
AK	AK	JF	LS	Ytjämnhet där ej annat anges. Surface finish otherwise not stated.	Material	Ersatt av Replaced of	Vikt Weight
180711	180711	180711	180711	Alla mått och uppgifter avser färdig produkt om ej annat anges All measures and other information refer to finished products unless otherwise not stated.		Kund ordernr. Customer order no	
				WELDING CLAMP FOR x2 BTB FRAMES		Ritn. nr. Draw. no.	Rev.
						1180293	A