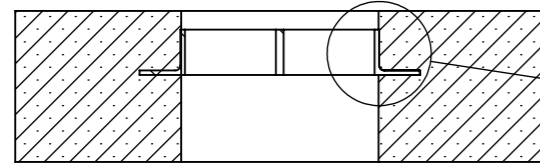


THIS DOCUMENT MUST NOT BE COPIED WITHOUT OUR WRITTEN PERMISSION, AND THE CONTENTS THEREOF MUST NOT BE IMPARTED TO A THIRD PARTY NOR BE USED FOR ANY UNAUTHORIZED PURPOSE. CONTRAVENTION WILL BE PROSECUTED.

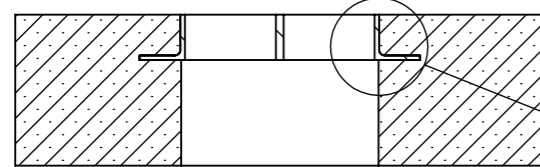
RGB/RGBO FRAMES

| REVISIONS | | | |
|-----------|-------------|------------|-----------|
| REV. | DESCRIPTION | DATE | SIGNATURE |
| A | | 2015-12-10 | AK |

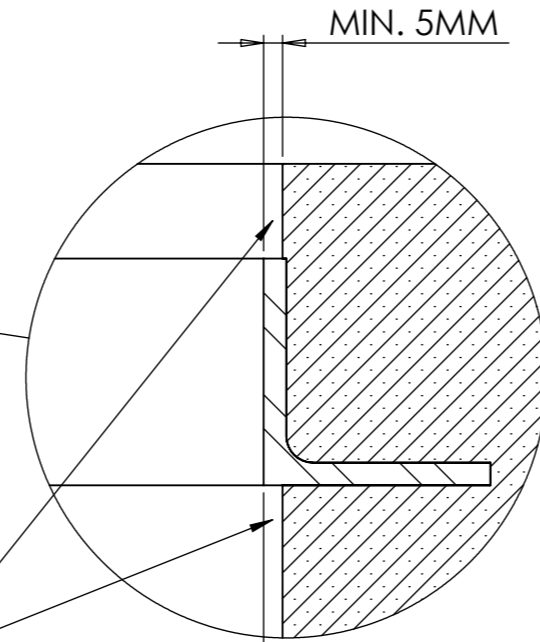


SECTION A-A
ALTERNATIVE
FRAME POSITION

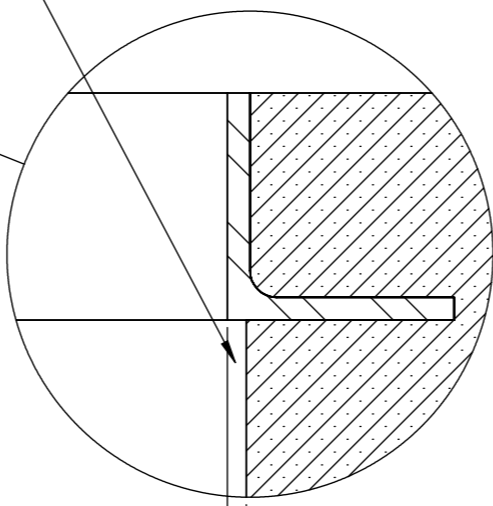
Minimum distance 5 mm between the inside of the frame and the cast hole for clearance of stayplates



SECTION A-A

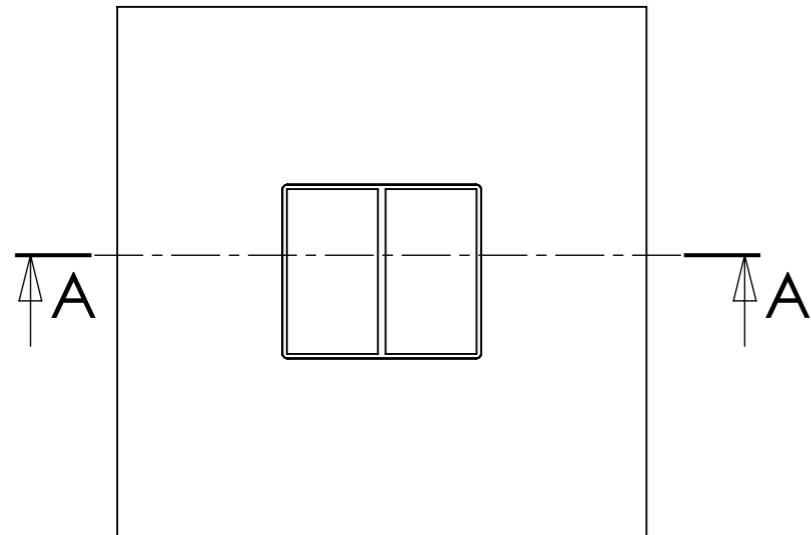
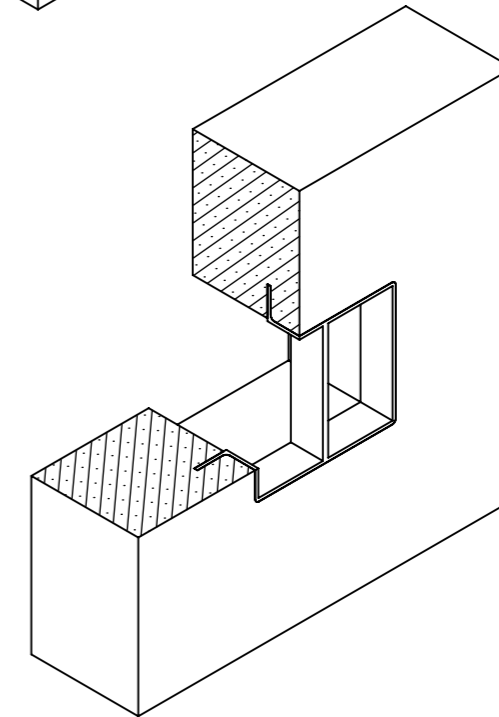
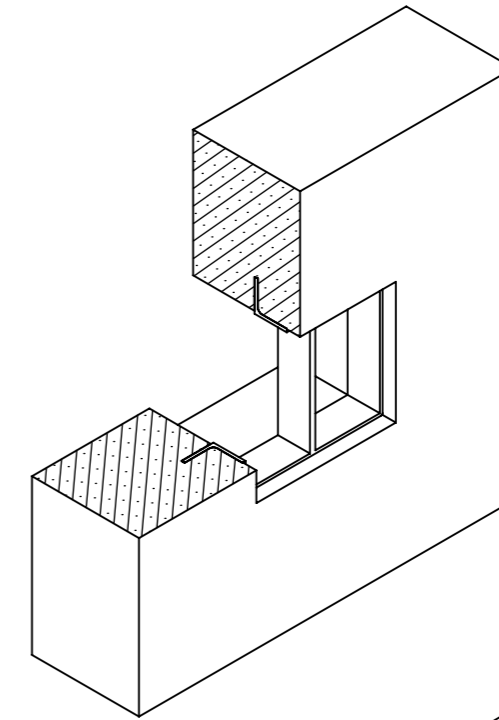


MIN. 5MM



MIN. 5MM

MIN. 5MM



| | | | | | | | |
|----------------|-----------------|----------------------|---------------------|--|-----------------------------------|------------------------------------|----------------|
| Ritad Drawn | Kontr. Check | Granskad Reviewed | Godkänd Approved | Tolerans där ej annat anges Tolerance unless otherwise not stated. | Smst. nr. Assembly drawing no. | Ersätter Replaces | E |
| AK | AK | JF | BJ | Ytjämnhet där ej annat anges. Surface finish otherwise not stated. | Material | Ersatt av Replaced of | Vikt Weight |
| 151204 | 151210 | 151210 | 151210 | Alla mått och uppgifter avser färdig produkt om ej annat anges All measures and other information refer to finished products unless otherwise not stated. | | Kund ordernr. Customer order no | |



ATEX / Ex
COMPONENT
INSTALLATION DRAWING
FOR CASTED FRAMES

| | |
|------------------------|------|
| Ritn. nr. Draw. no. | Rev. |
| 1150439 | A |

This typical installation drawing is valid for all frame types and combinations.