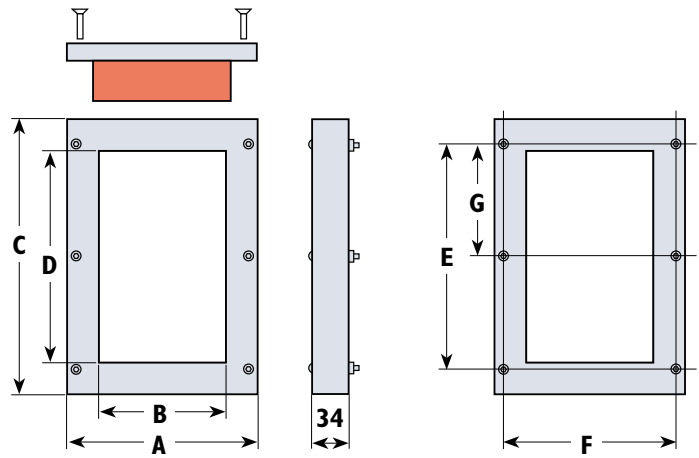


# X-Series cable transit

## Frames

### Specification

- Polyester glass filled compression moulding
- UV stabilised material with low smoke index
- Ultra-low weight
- High strength



### Frames supplied with:

- Compression screws (M6 countersunk head)
- Compression system
- Gasket
- Optional extras include Adaptor Flange, Blanking Plate and Allen key. Details on request.

### Sizes

Type	A	B	C	D
X1	178	120	260	200
X2	118	60	210	150

### Fixing Hole Dimensions

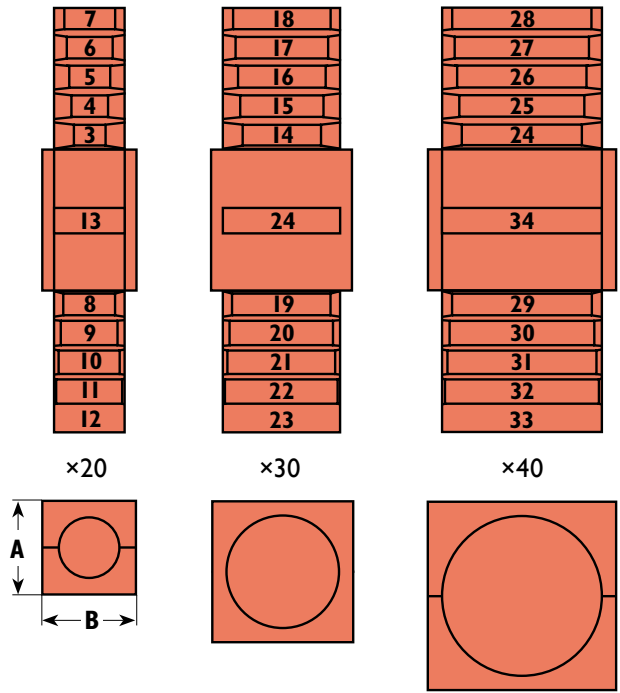
Type	E	F	G
X1 (6 holes M6 clearance)	215	160	107.5
X2 (4 holes M6 clearance)	130	88	210

Measurements in millimetres.  
N.B. Multiple frames are available.  
Details on request.

### Testing

- Fire** BS 476 Pt 20 1 hr integrity
- Pressure** IP 67
- Vibration** Available on request
- UV** Available on request
- Temperature Range** Available on request
- Chemical Resistance** Available on request

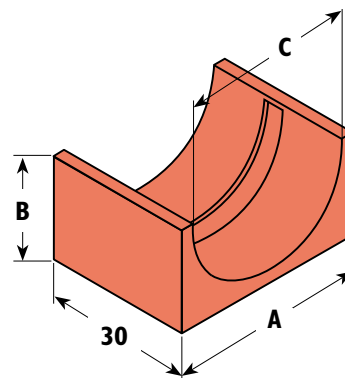
### Sizing Cables



### Blocks

Block size	Width	Height	Cable/Pipe Size
	A	B	C
X20/3-13	20	10	2.5-13.5
X30/14-24	30	15	13.5-24.5
X40/24-34	40	20	23.5-34.5

Measurements in millimetres.  
 N.B. Sold as complete block sealed  
 (2 half blocks & plug).

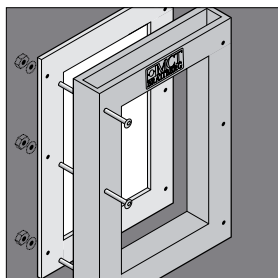


### Staybars

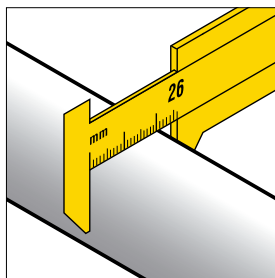
Stainless steel 3 mm diameter available in 2 sizes:

- Type 1** 120 mm long ref SB 120
- Type 2** 60 mm long ref SB 60

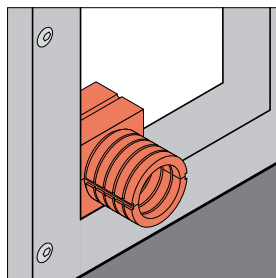
**N.B.** For pressure installation lubricate all components liberally.



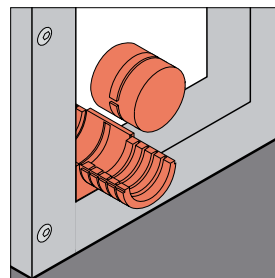
**1** Fix frame to opening using gasket and M6 screws supplied.



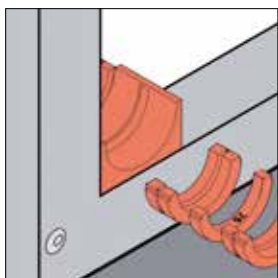
**2** Measure cable. In this example cable has a diameter of 26 mm.



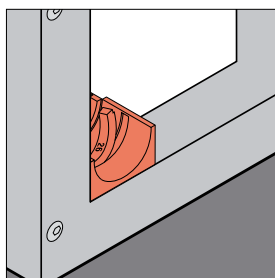
**3** Once cable is sized select appropriate block.



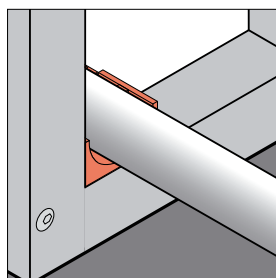
**4** Remove top half of block and plug.



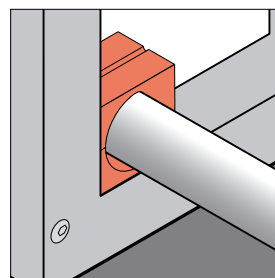
**5** Detach sealing rings from main block and retain ring corresponding to measured cable size. In this example 26 mm.



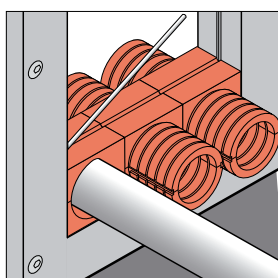
**6** Place the 26 mm sealing ring in centre groove of block.



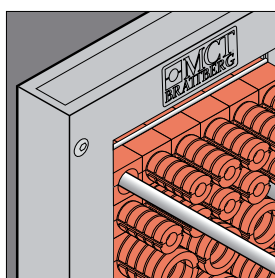
**7** Place cable on block.



**8** Replace top of block to encase cable.



**9** If more cables are required repeat the sequence. If not insert blanks to complete row and insert staybar to secure.



**10** Build up frame repeating the process described in steps 2-9. In this example 2 more cables have been added using other block sizes.



**11** Insert compression system and tighten using allen key.